



ROCHESTER SCHOOLS MODERNIZATION
PROGRAM PHASE III
CONSTRUCTION MANAGEMENT SERVICES FOR A PHASE 3C PROJECT
East Campus (Project # 103-039)

ADDENDUM #2

Prepared by
Rochester Joint Schools Construction Board (RJSCB)
03 June 2025

The Request for Proposals dated 13 May 2025 is amended, clarified, and modified as follows.

ITEM 2-1:

Question: In reviewing the schedules for Douglas and East that were provided with the Addendum #1 documents, I do not see the Program Verification Estimate shown in the timeline. Please clarify.

Answer: Please see updated design/preconstruction schedule attached showing estimating activity for Program Verification.

The Architect is expected to have design documents completed for the start of the estimating period. They can be working on assembling the Preliminary Submission materials while the estimating is in progress.

ITEM 2-2:

Clarification/Modification: Following the visit to view the roof's condition at East Campus, the Roof Plan previously issued as part of Addendum #1 has been amended and is attached.

ITEM 2-3:

Modification: The planned construction duration for the East Campus, due to its limited scope of works, has been reduced to 12 months, starting from October 2027 to September 2028. The focus at the start of construction will be on material and equipment approvals, fabrication and deliveries.

Proposers for Construction Manager are required to submit a staffing plan as part of their proposal using the 12-month duration as well as the time dedication from each of their staffing members.

END OF ADDENDUM #2

Do not include. Still under Warranty.

ROOF ASSEMBLY TYPE 3

INSTALLED - 2013
SBS ROOF
CONCRETE DECK
UNKNOWN
UNKNOWN
60,498 SF

1957
2002
2002
1957

KEY:

YEAR OF INSTALLATION*
ROOF TYPE
DECK TYPE
INSTALLER
WARRANTY PERIOD
AREA (SF)**

*YEAR OF INSTALLATION FOR ROOF ASSEMBLY TYPE VARIES DEPENDING ON ITS LOCATION

**COMBINED WHERE ROOF TYPE APPLIES TO MULTIPLE ROOF AREAS

GENERAL NOTES:

1. ROOF ASSEMBLY TYPES ARE UNIQUE TO EACH BUILDING
2. ROOF ASSEMBLY TYPES ARE ORGANIZED BASED ON ROOFING MEMBRANES AND DECK MATERIALS



ROOF RESTORATION AREA: 11,726 SQ.FT.
ESTIMATED COST FOR A ROOF RESTORATION SYSTEM: \$281,424 +/-

LEGEND:



INDICATES STEEP-SLOPE ROOF AREAS

ROOF ASSEMBLY TYPE 2

INSTALLED - 1991
SINGLE-PLY EPDM
CONCRETE DECK
UNKNOWN
UNKNOWN
52,338 SF

ROOF ASSEMBLY TYPE 1

INSTALLED - 1994*
BUILT-UP ROOF
CONCRETE DECK
CAYUGA LAKE ROOFING
5 YEAR WARRANTY
24,525 SF

Add this roof into scope

ROOF ASSEMBLY TYPE 1

INSTALLED - 1988*
BUILT-UP ROOF
CONCRETE DECK
UNKNOWN
UNKNOWN
17,555 SF

ROOF ASSEMBLY TYPE 1

INSTALLED - ?
BUILT-UP ROOF
CONCRETE DECK
UNKNOWN
UNKNOWN
1,764 SF

ROOF ASSEMBLY TYPE 1

INSTALLED - 1990*
BUILT-UP ROOF
CONCRETE DECK
UNKNOWN
UNKNOWN
45,783 SF**

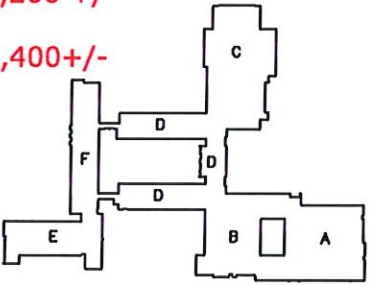
ROOF REPLACEMENT AREA: ~~70,560~~ SQ.FT.
ESTIMATED COST FOR A 2-PLY SBS MOD-BIT ROOF SYSTEM: \$3,175,200 +/-
ESTIMATED COST FOR AN EPDM ROOF SYSTEM: \$2,822,400 +/-

Corrected 92,172 SF

B2 Alternate - Do not include. Replaced previously.

Do not include. Replaced previously.

Do not include. Replaced previously.



#22171.00
DATE: FEB. 7, 2023



East High School #261
1801 East Main Street Rochester, NY 14609

Roof Plan
28-18-00-01-0-103

